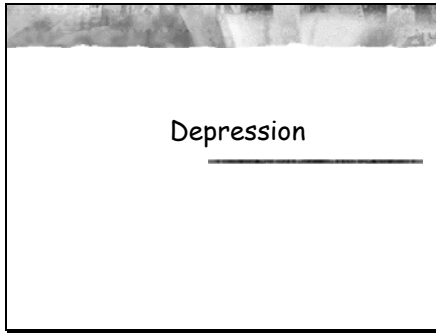
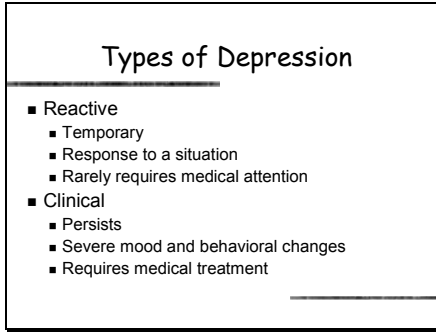


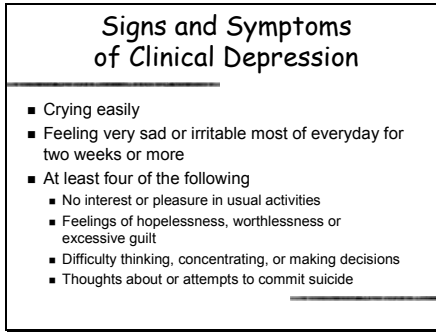
Slide 1



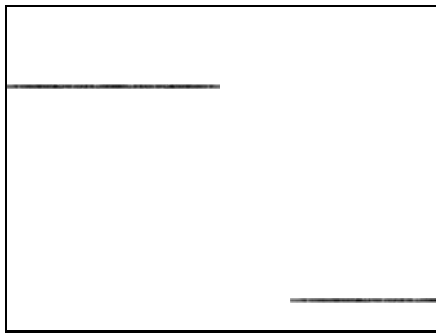
Slide 2



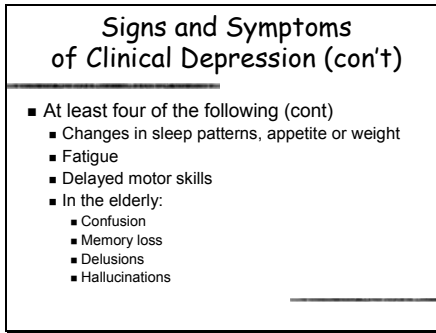
Slide 3



Slide 4



Slide 5



Slide 6

Causes of Clinical Depression

- Genetic predisposition
- Common triggers
 - Prolonged stress
 - Trauma
 - Illness
 - Alcohol/drug abuse
- Multiple major events
- Aging with illness

Slide 7

Aging with Illness

- Chronic or acute conditions
 - Arthritis
 - Sensory impairment
 - Cancer
 - Heart disease
- Side effects of medications
- Caregiving responsibilities
- Alcohol use
- Loneliness

Slide 8

Diagnosis of Depression

- Underdiagnosed
 - Physical ailments often mask
 - Physical complaints easier to dx and tx
- Misdiagnosed
 - Dementias such as Alzheimer's mistaken
 - Consider fatigue part of normal aging
 - Consider bereavement as cause

Slide 9

Outcomes of Undiagnosed Depression

- Suicide
 - Depression a major risk factor
- Quality of life is reduced
 - Loss of interest in ADLs i.e. eating
- More susceptible to disease due to reduced immunity

Slide 10

Treatment

- Success rate
 - 80% w/ psychotherapy, meds, or both
 - Tx usually outpatient
- Types of treatment
 - Medications
 - Antidepressants
 - SSRIs
 - May take 6 weeks before having effect
 - May need to be taken throughout life

Slide 11

Treatment for Elderly Patients

- May be more difficult due to
 - Heart diseases or other medical problems
 - Interaction of multiple meds

Slide 12

Treatment (cont)

- Psychotherapy
 - All types
- Electroconvulsive therapy
 - Chosen when
 - Frail with severe depression
 - Cannot tolerate meds
 - Don't respond to meds
 - When suicide risk is great
 - Side-effects
 - Acute amnesia

Slide 13

Treatment (cont)

- Social resources
 - Stressors and isolation aggravate depression
 - Must change situation or depression will return
 - Get involved with others

Slide 14

Dental Mgmt Concerns

- Recognize and refer
- Manage side-effects of medications
 - Dry mouth
 - Caries
 - Tardive dyskinesias
 - 40% of elderly on neuroleptics have this as a result
 - Hypotension
- Be aware of occurrence of atypical facial pain
