

DISEASES OF THE TEETH AND JAWS

Enamel Hypoplasia

- Local or systemic factors that interfere with the normal matrix formation.
- Presents enamel surface defects and irregularities.
- Causes:
 - Nutritional deficiency
 - Neurologic defects (eg, cerebral palsy)
 - Nephrotic disorders
 - Allergies
 - Local infection and trauma
 - X-rays
 - Rubella

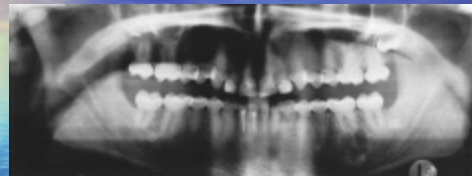
Dentinogenesis Imperfecta

- Hereditary developmental disturbance of the dentin in the absence of any systemic disorder.
- Similar dental changes may be seen in conjunction with systemic hereditary disorder of bone, osteogenesis imperfecta.
- After the primary dentition is complete, enamel breaks away from the incisal edge and the occlusal surface.



- Characteristics:
 - grayish/brownish opalescent color

Dentinogenesis Imperfecta (Con't)



- Characteristics (Con't)
 - Bulbous crowns
 - Cervical constriction
 - Obliterated pulp chambers and canals
- Tx: Full coverage. Enhance esthetics and to prevent gross abrasion of the tooth structure.

Amelogenesis Imperfecta

- Group of conditions that demonstrate developmental alterations in the structure of the enamel in the absence of a systemic disorder.
- Defective tooth structure is limited to the enamel.
- Teeth are yellowish/brownish in color.
- The enamel becomes stained due to the roughness of the surface and the increased permeability.



- Tx: Depends on the severity. Mostly full coverage (since the dentin structure is normal, the teeth can be prepared for standard crowns).
 - Decrease hypersensitivity
 - Improve esthetics
 - Prevent gross abrasion of the tooth structure.

Anodontia

- Implies the complete failure of the teeth to develop.
- It is one of the manifestations of ectodermal dysplasia.
- Since the absence of teeth predisposes to a lack of growth of the alveolar process, the construction of dentures is complicated.

Oligodontia (Partial Anodontia)

- When a number of the primary teeth fail to develop.
- Other ectodermal deficiencies are usually evident.
- The size of the primary teeth that are present may be normal or reduced.
- The anterior teeth often have a conical shape, which is characteristic of oligodontia associated with an ectodermal dysplasia.
- The teeth most frequently missing are the mandibular second bicuspid, the maxillary lateral incisors, and the maxillary second bicuspid.

Additional Definitions

- Hypodontia
- Hyperdontia
- Microdontia
- Macrodonia