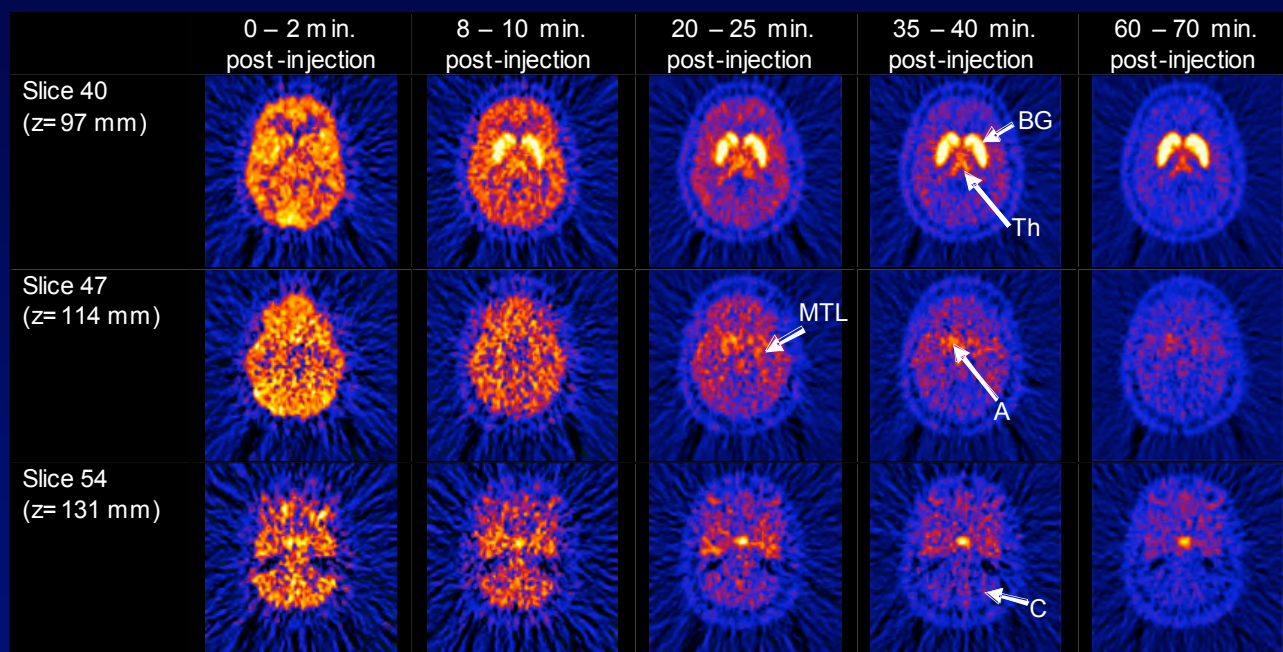


# $^{18}\text{F}$ -Fallypride

## Time course comparison in human subject



A sophisticated “detective” to identify patients with and without a dopaminergic deficit





## Our goal: Promoting the use of novel imaging agents at USC

### Excerpts from a recent Funding Opportunity Announcement

"Radiopharmaceutical imaging agents are typically developed with a specific organ system, utility, or disease in mind, but the targets of the agents are often relevant to multiple organs and diseases"

### BARRIERS

- Translating the fruits of basic research to the clinic: easier process if the tracer has been already used in human for other purposes.
- Translating chemistry projects for the synthesis of novel probes useful in the clinic: higher barrier to overcome.

### RECOMMENDATIONS

- ❑ More support from USC for junior faculties (start-up fund)
- ❑ More help from USC in getting money for research (workshops, seminars, reference persons)

