

What is *Household Formation*?

- ◆ How many housing units are required per 1000 population

- ◆ **Simple Method**

NUMBER OF HOUSEHOLDS
= POPULATION / PERSONS PER HOUSEHOLD

e.g., 333 Households = 1000 pop / 3.0 persons per household

- ◆ **Problems**

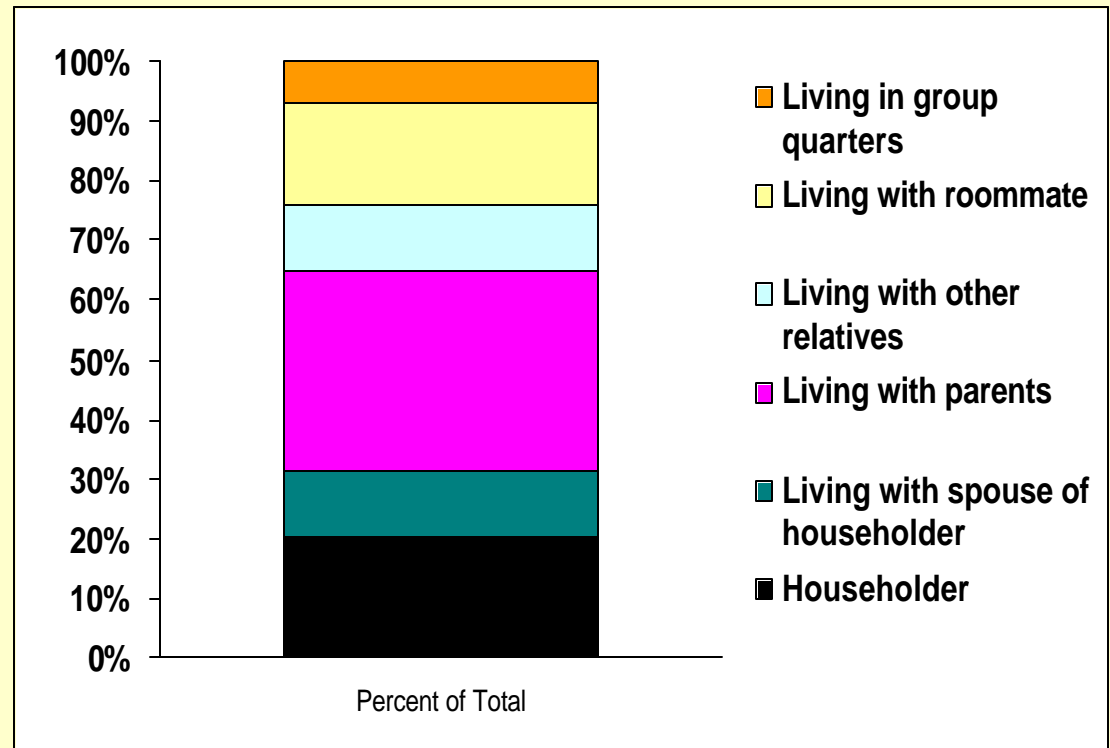
- Includes children
- Treats all ages of adults equally, even though some are more likely to form households than other
- Ignores differences between ethnic groups or between immigrants and native borns

Household Formation

Better Method

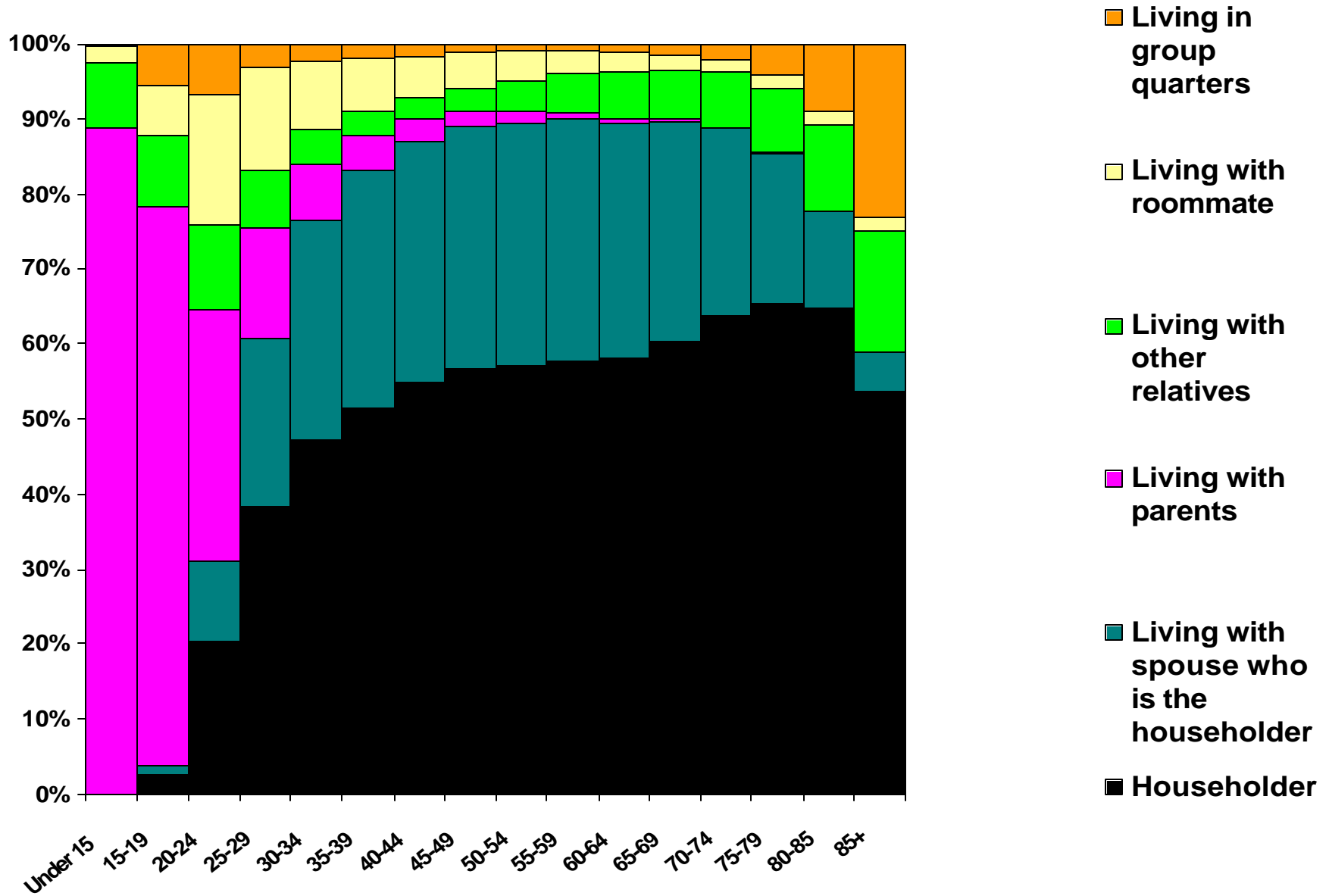
MEASURE HOUSEHOLD FORMATION
BY SPECIFIC LIVING ARRANGEMENTS
AT EACH AGE

For example, at age 20-24...



Household Formation of 20-24 Year Olds, California 1990

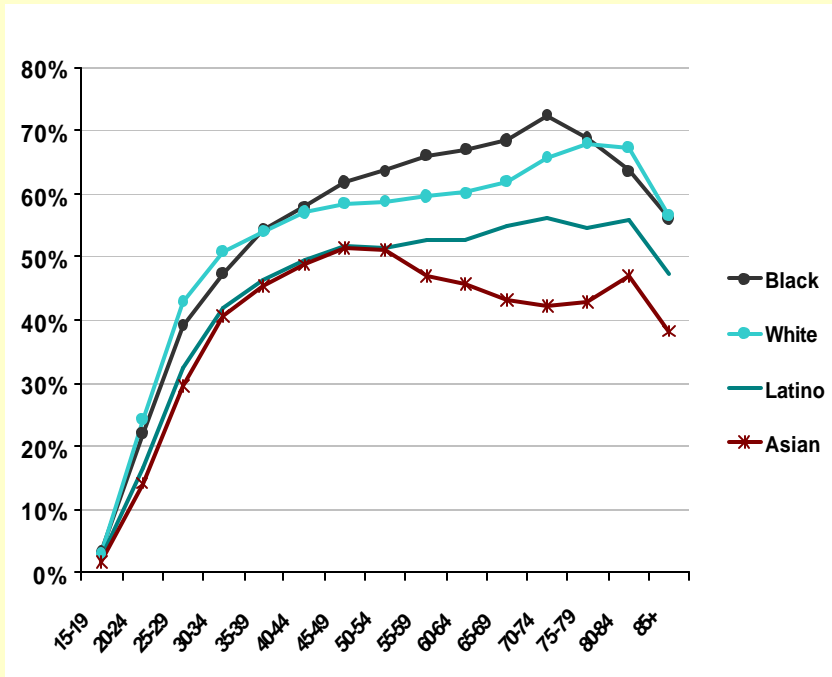
HOUSEHOLD FORMATION (HOUSEHOLDER) BY 5-YEARS OF AGE California, 1990



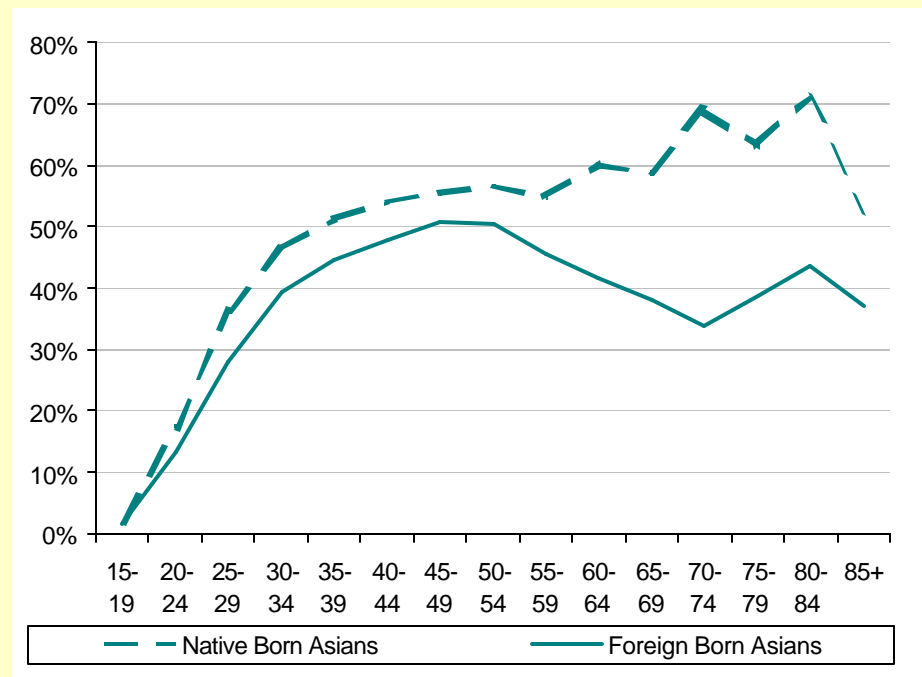
Household Formation

Better Method

MEASURE HOUSEHOLD FORMATION BY ETHNIC GROUPS AND IMMIGRATION STATUS



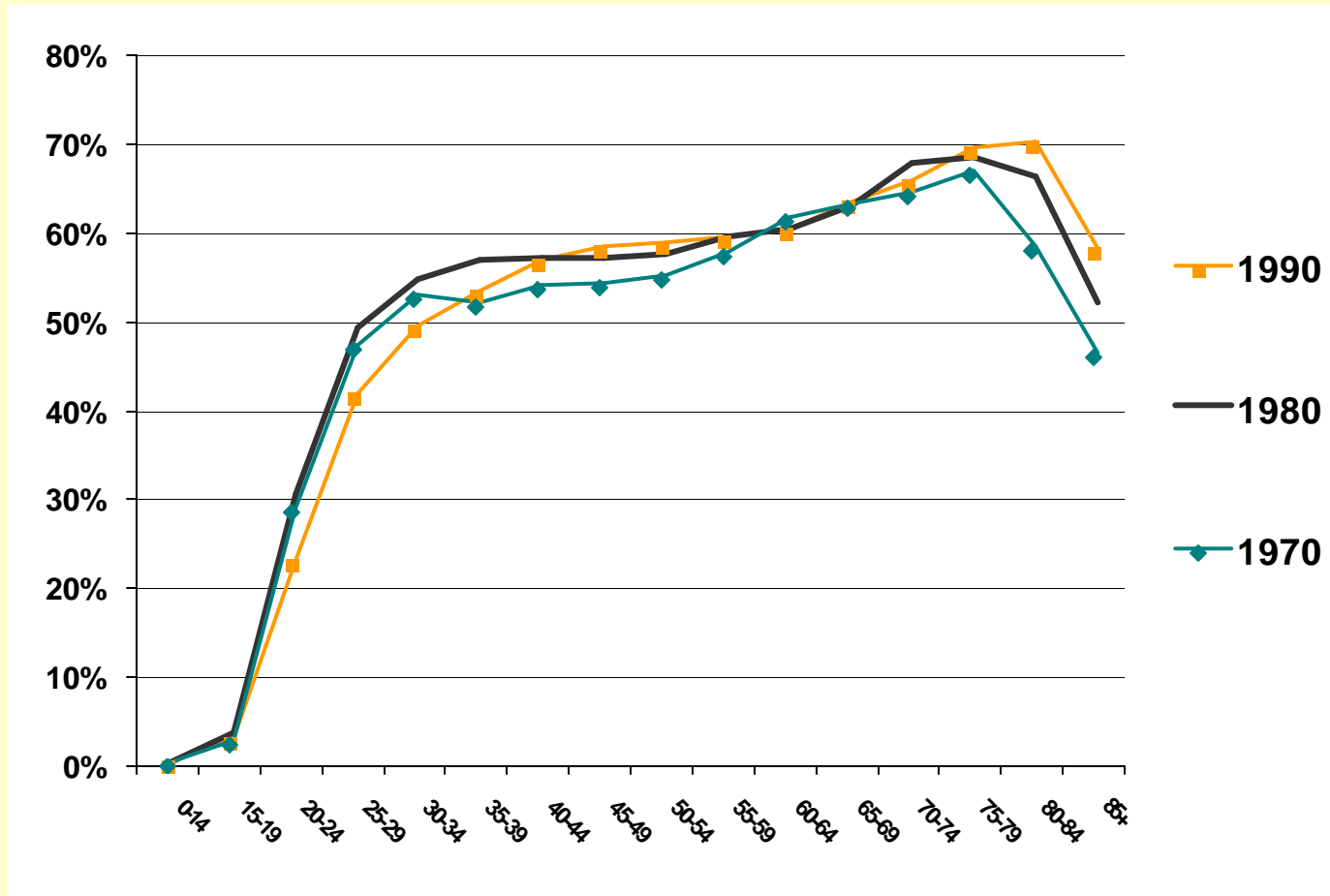
Percentage who are Householders by Age Group & Ethnicity California 1990



Percentage of Native- and Foreign Born Asians who are Householders, by Age Group California 1990

Household Formation

Household Formation patterns have changed with time



Percentage of Whites Born in California Who are Householders, by Age Group
California 1970-1990