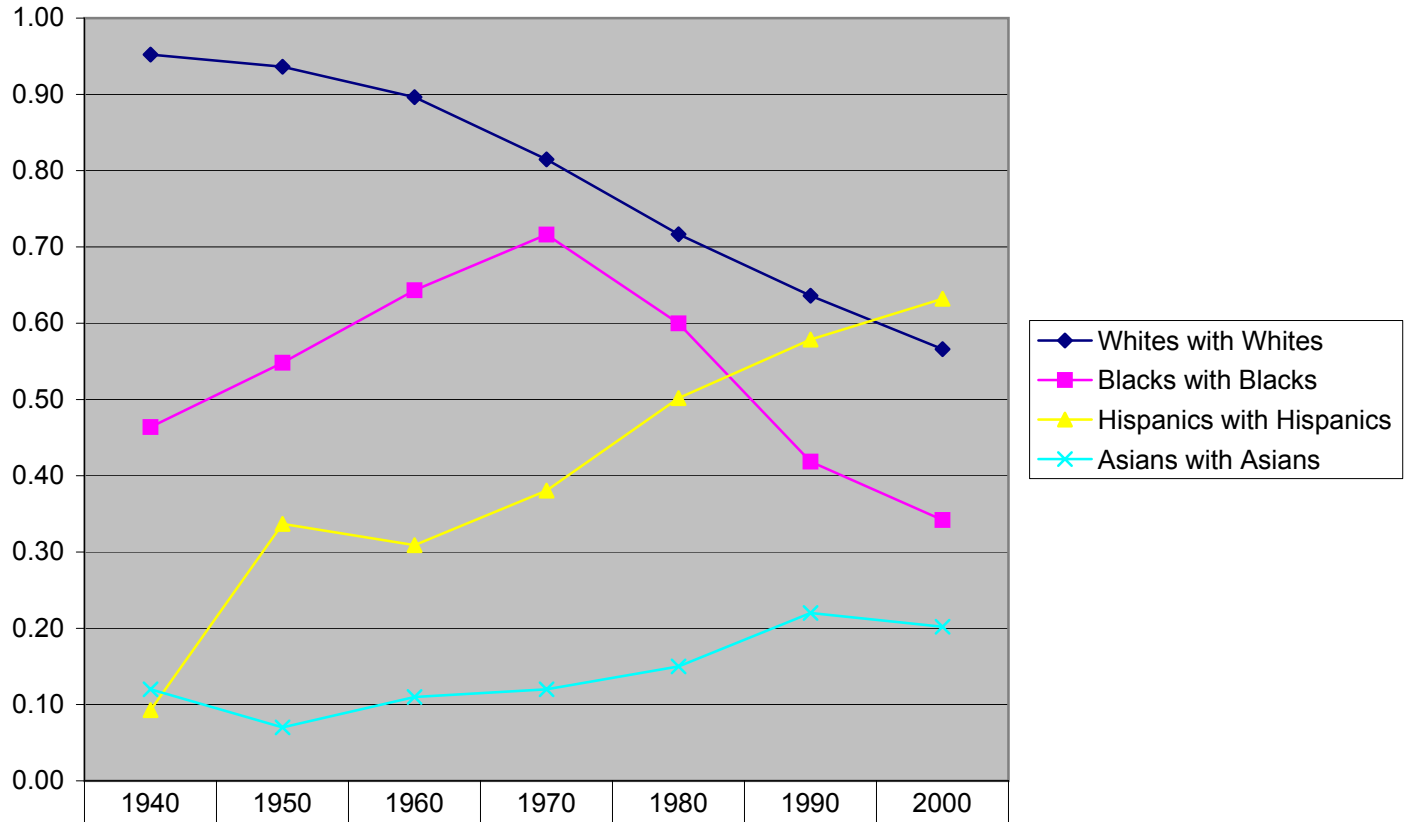


**Isolation Index:  
Probability that members of each group will meet members of their own group  
in their census tract, LA County, 1940-2000**



◆ Whites with Whites	0.95	0.94	0.90	0.81	0.72	0.64	0.57
■ Blacks with Blacks	0.46	0.55	0.64	0.72	0.60	0.42	0.34
▲ Hispanics with Hispanics	0.09	0.34	0.31	0.38	0.50	0.58	0.63
× Asians with Asians	0.12	0.07	0.11	0.12	0.15	0.22	0.20