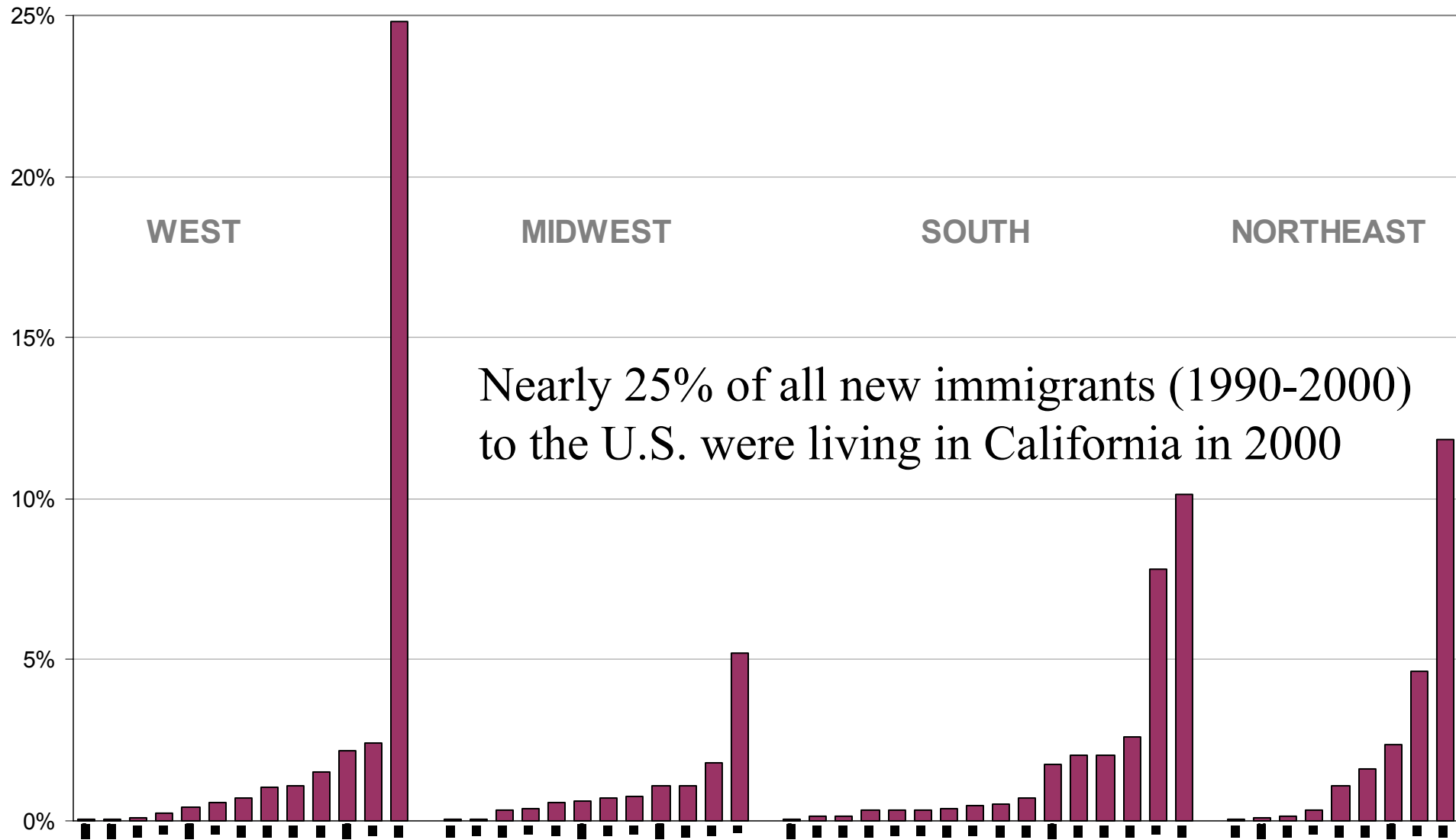




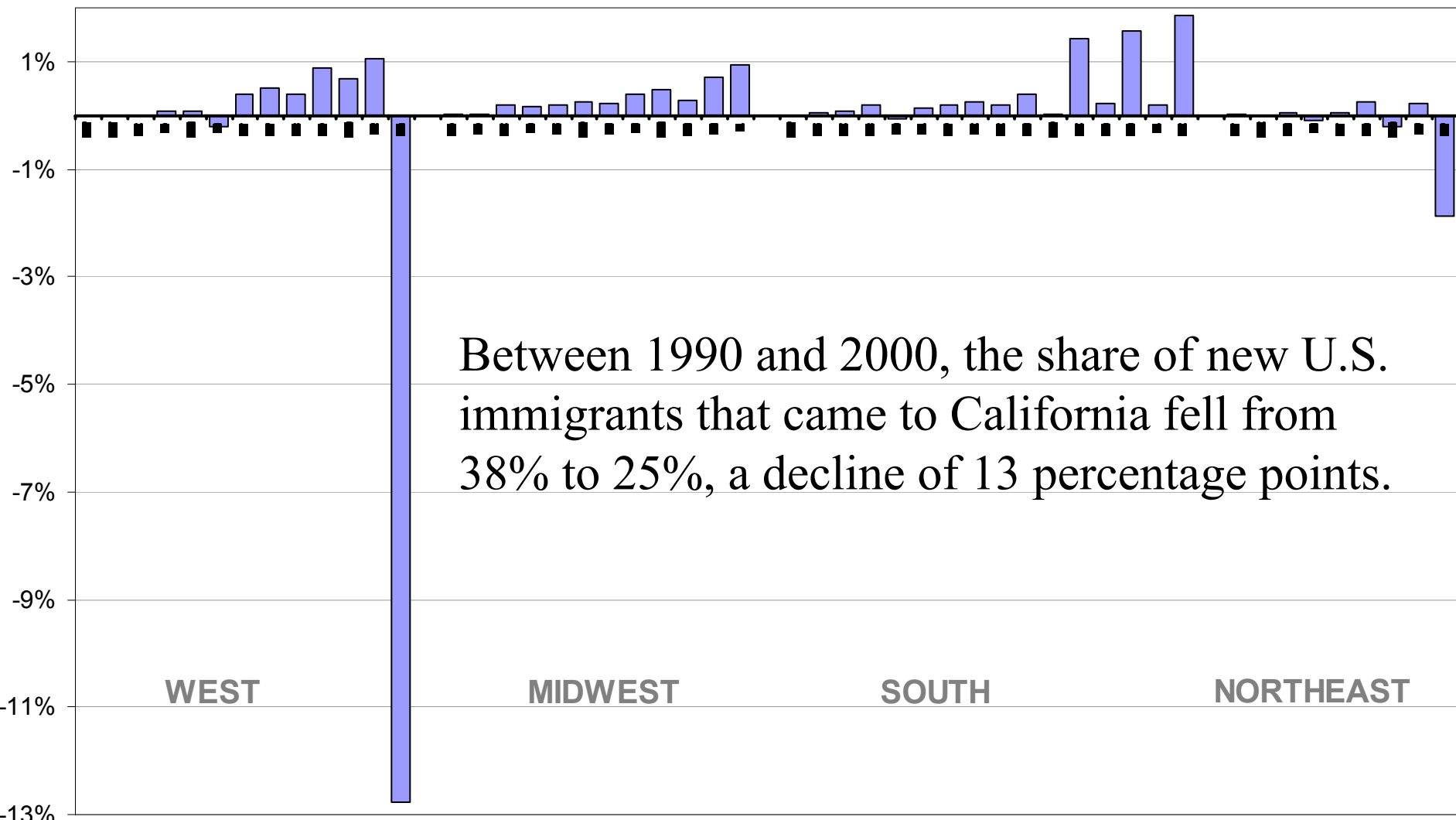
# Hopeful Outlook of Growing Immigrant Duration

# New Immigrant Arrival Attraction Rates for 50 States, 2000



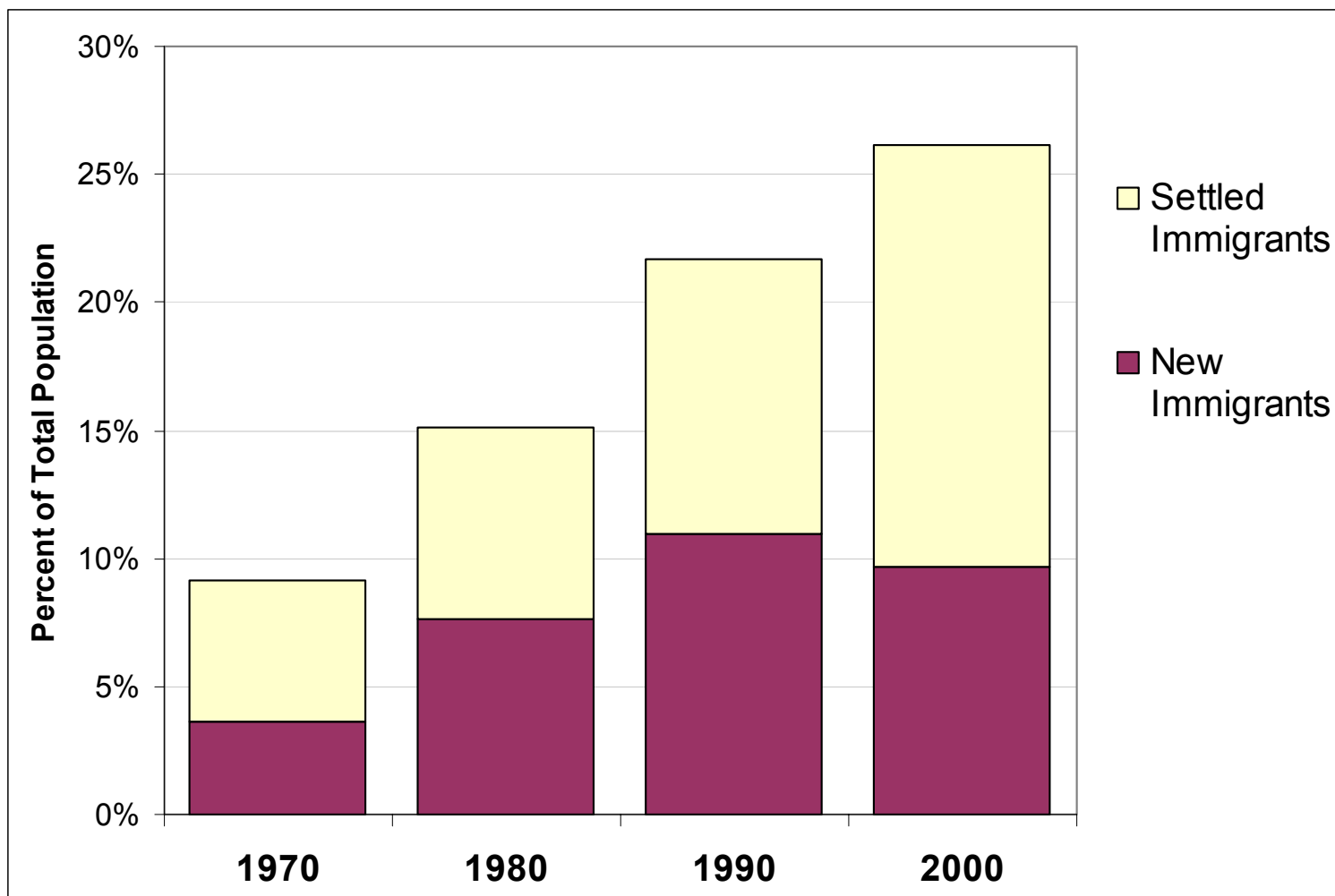
Nearly 25% of all new immigrants (1990-2000) to the U.S. were living in California in 2000

# Change of New Immigrant Arrival Attraction Rates for States, 1990-2000

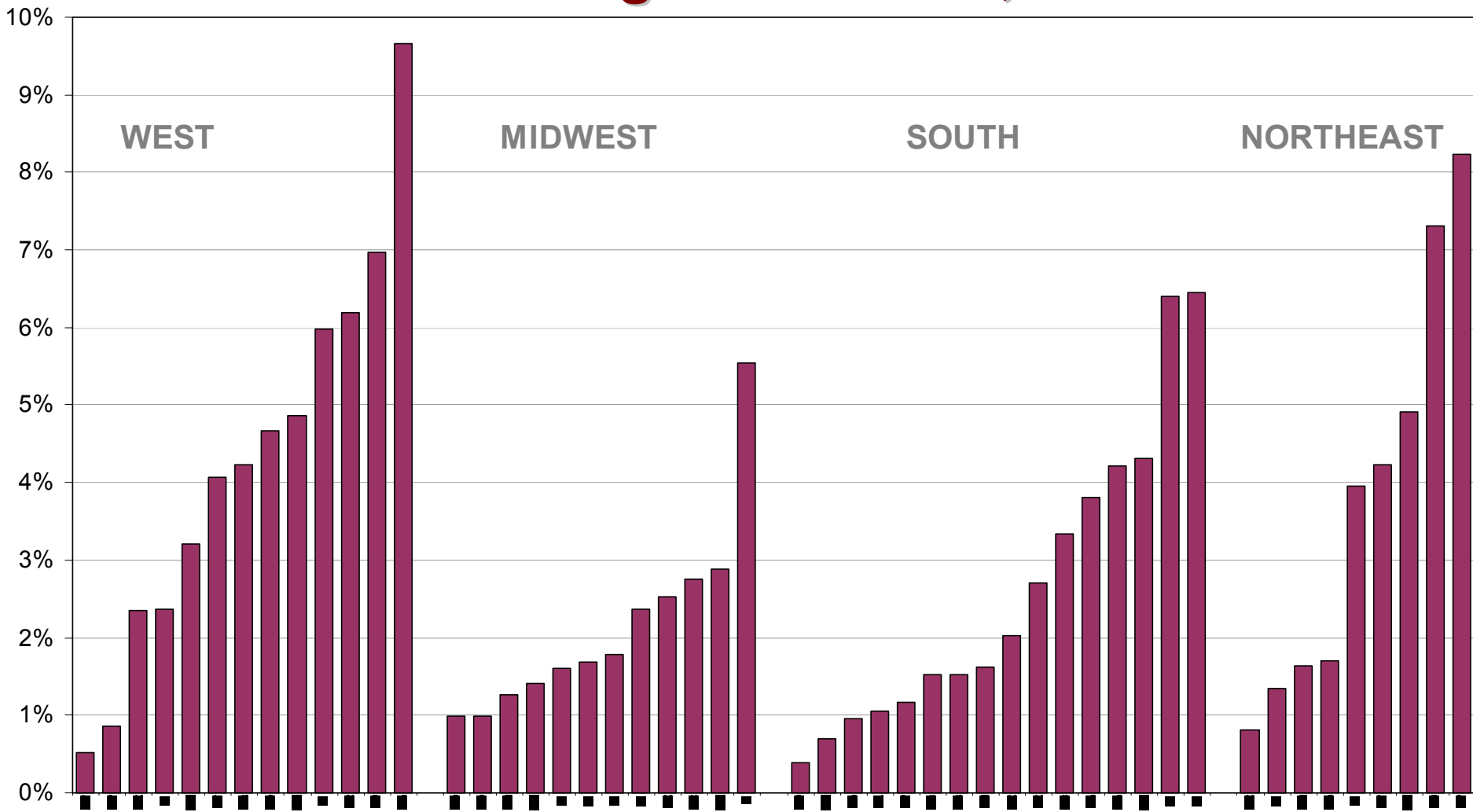


Between 1990 and 2000, the share of new U.S. immigrants that came to California fell from 38% to 25%, a decline of 13 percentage points.

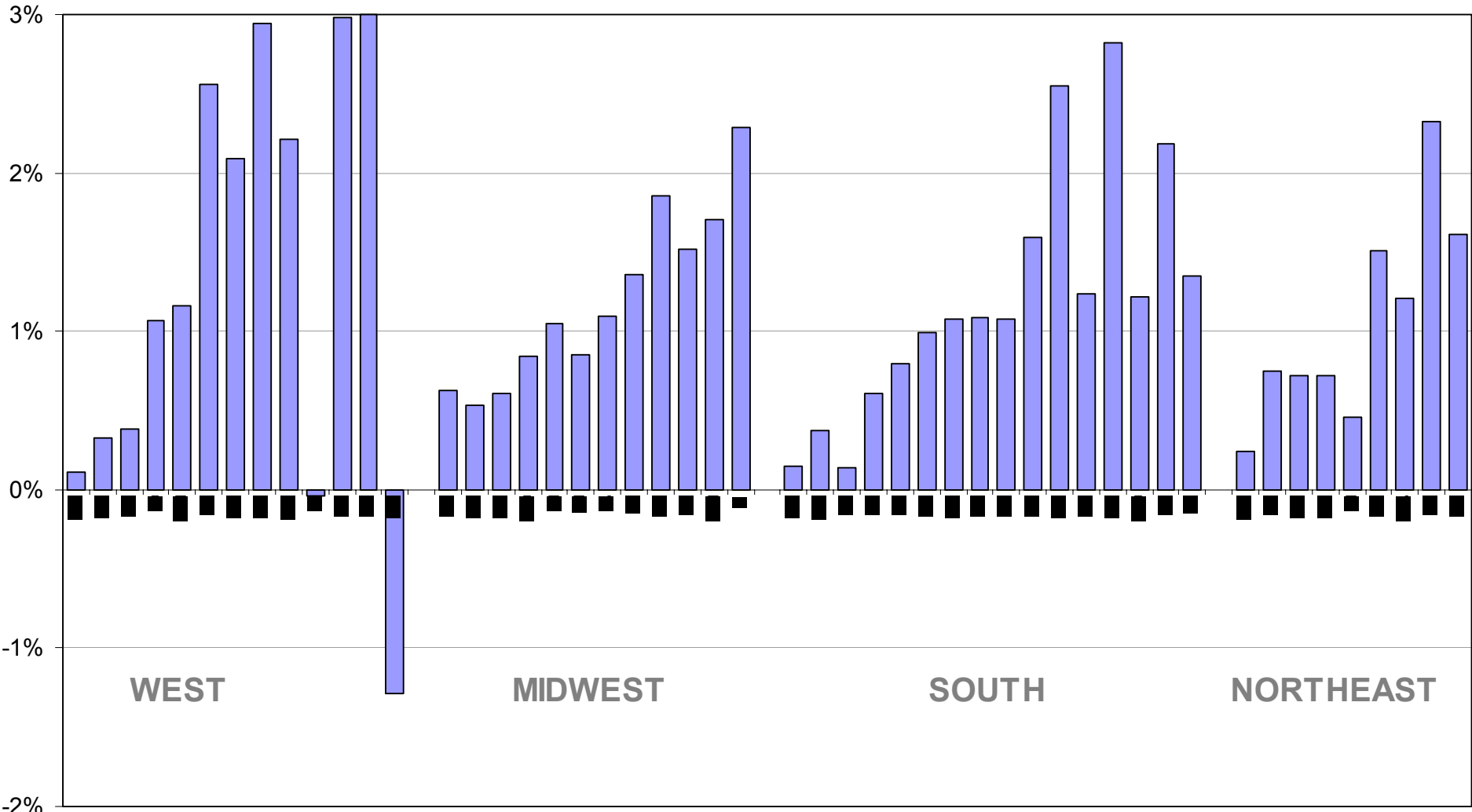
# Percent of California Population Who Are Immigrants



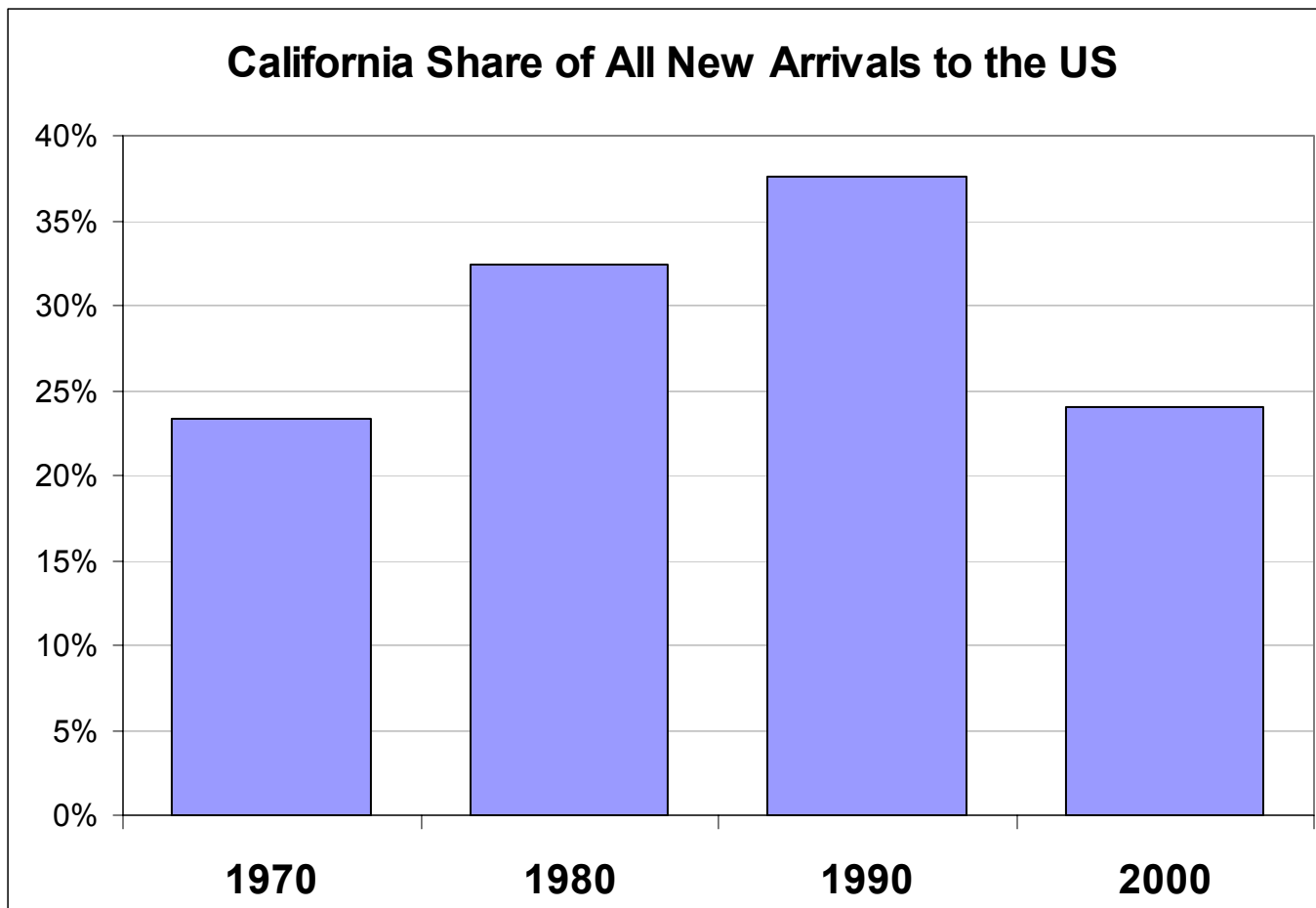
# Share of Each State's Population that is New Immigrant Arrivals, 2000



# Change of Share of Each State's Population that is New Immigrant Arrivals, 1990 - 2000

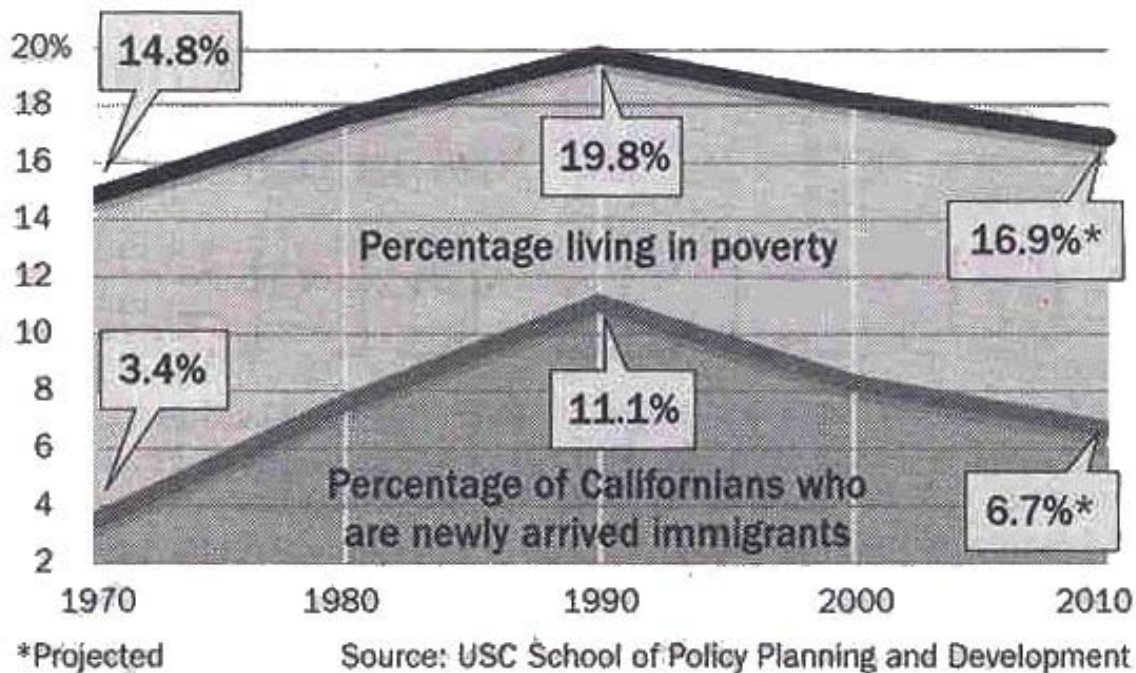


# Immigrants Diverting from California



## Immigrants' Progress

Newly arrived immigrants—those here less than 10 years—have made up a progressively smaller proportion of California's population, and the poverty rate among the state's foreign-born residents is declining.

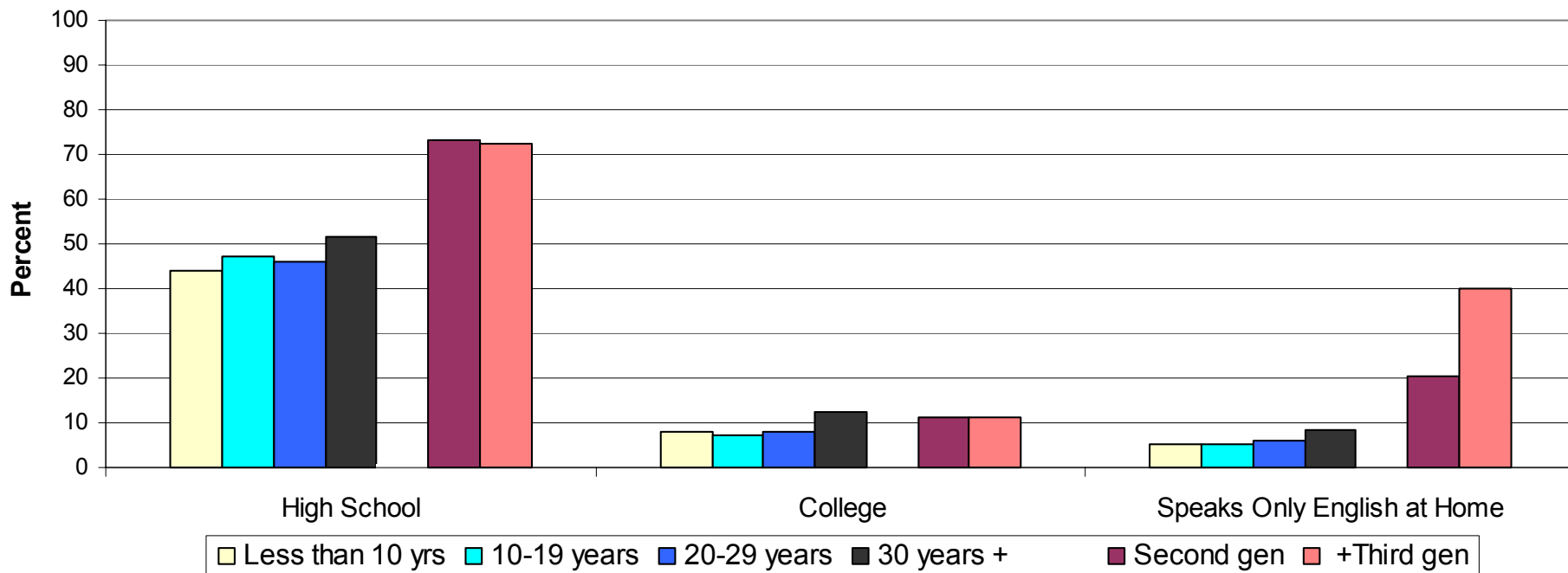


Los Angeles Times

Los Angeles Times, 1-23-01, A-1

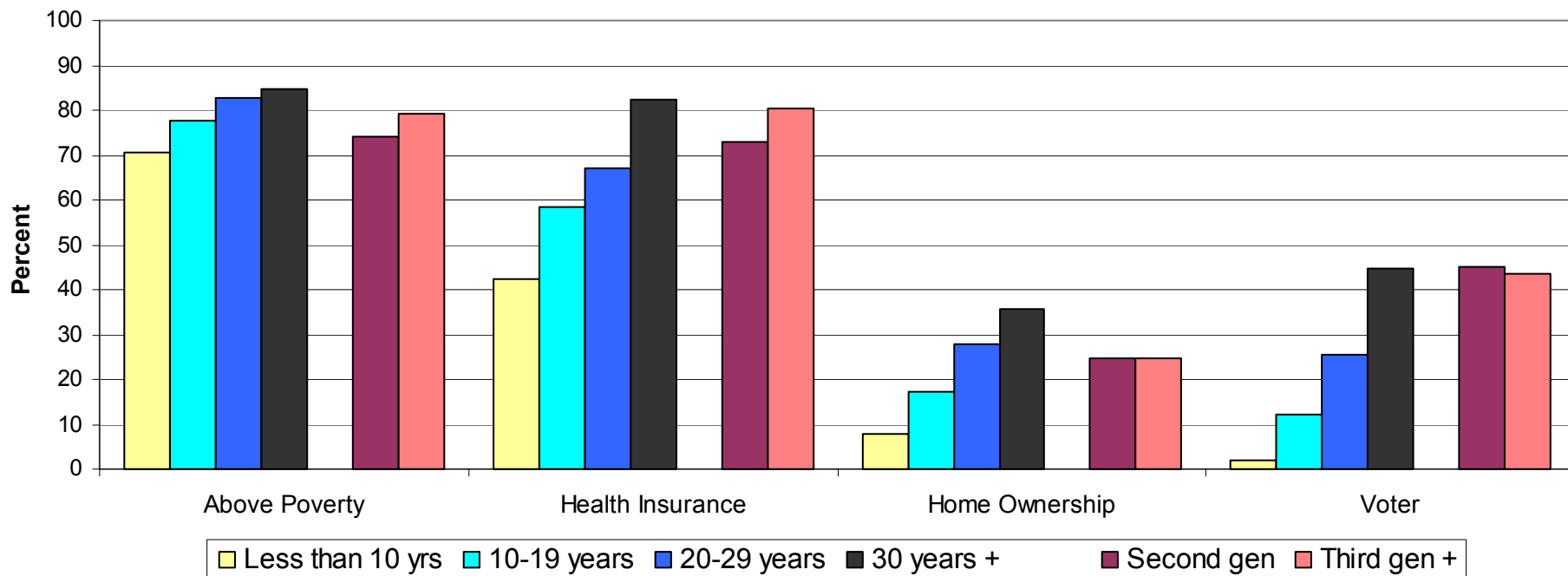
# Measures of Immigrant Assimilation, by Generation and Duration in the U.S., Latinos Only

Change Between Generations



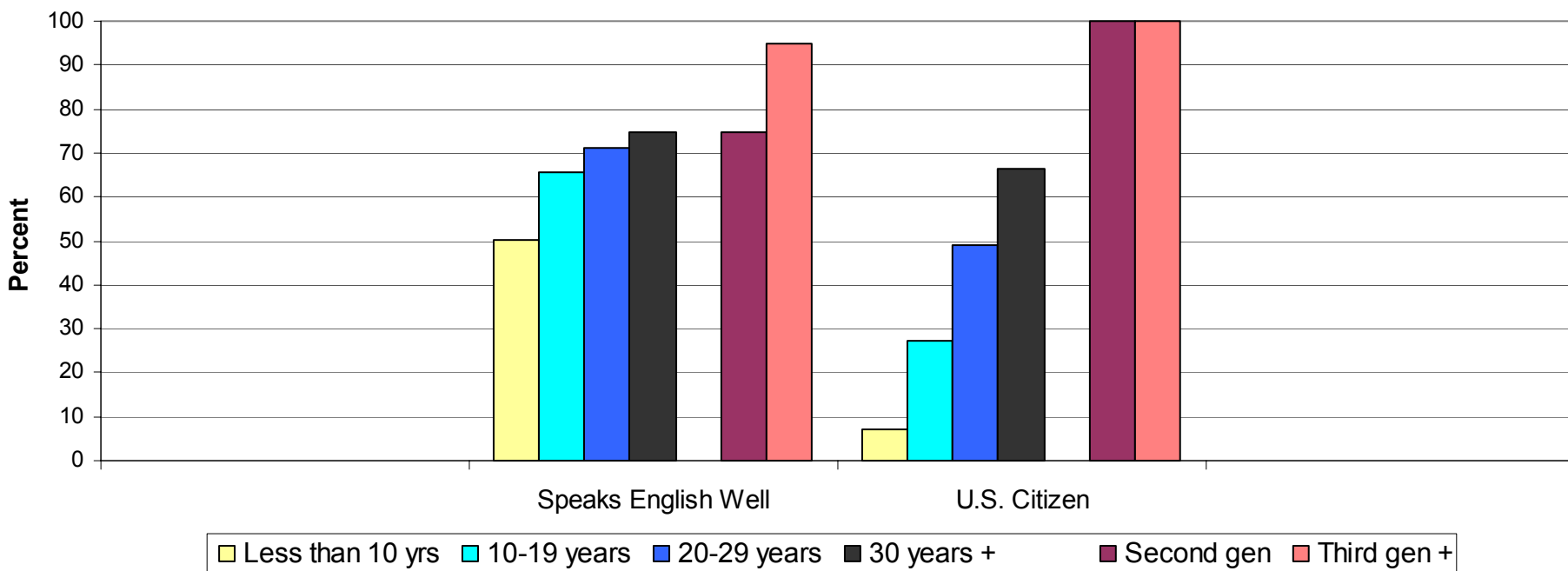
# Measures of Immigrant Assimilation, by Generation and Duration in the U.S., Latinos Only

Change with Growing Duration within the First Generation

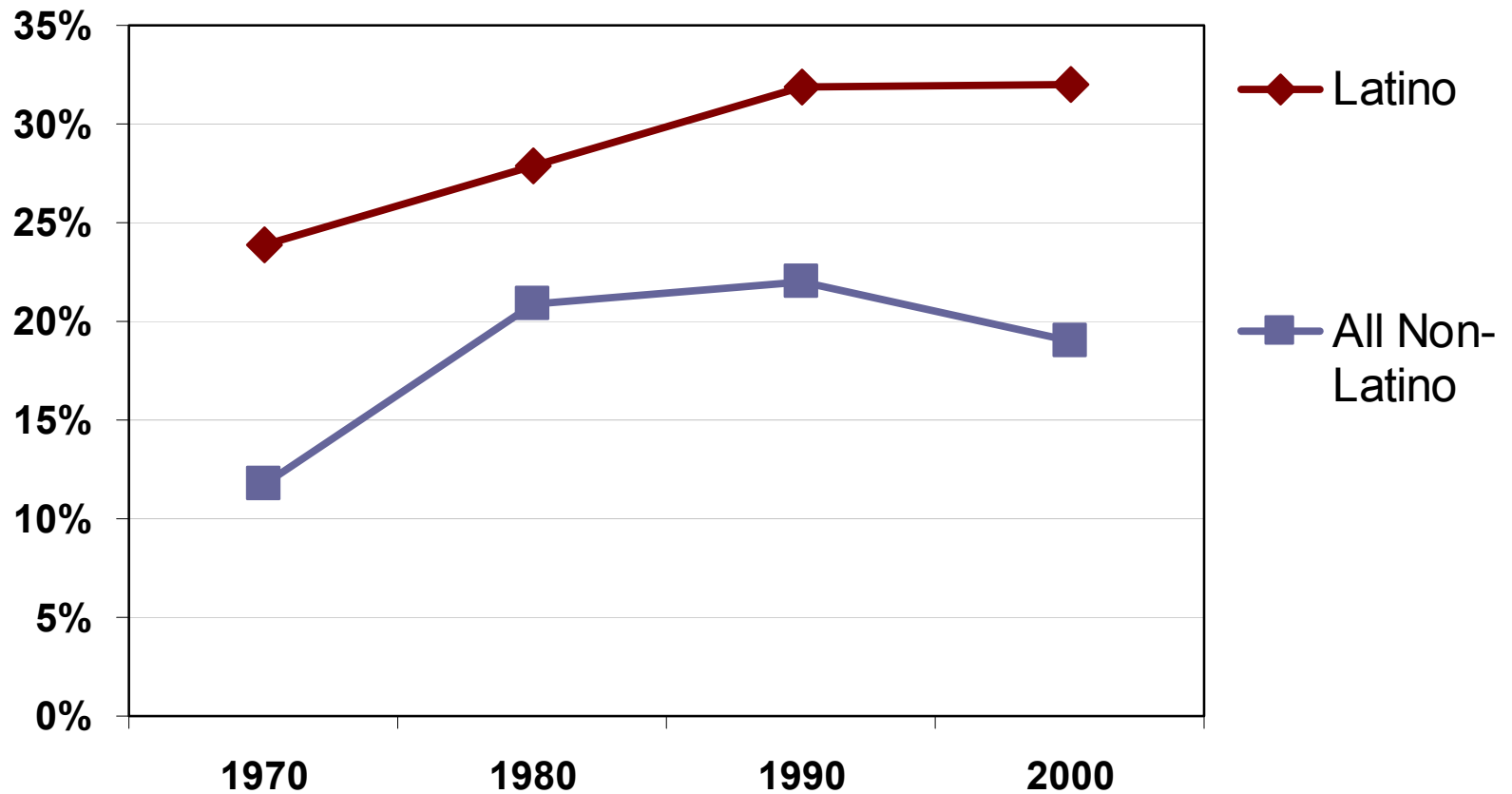


# Measures of Immigrant Assimilation, by Generation and Duration in the U.S., Latinos Only

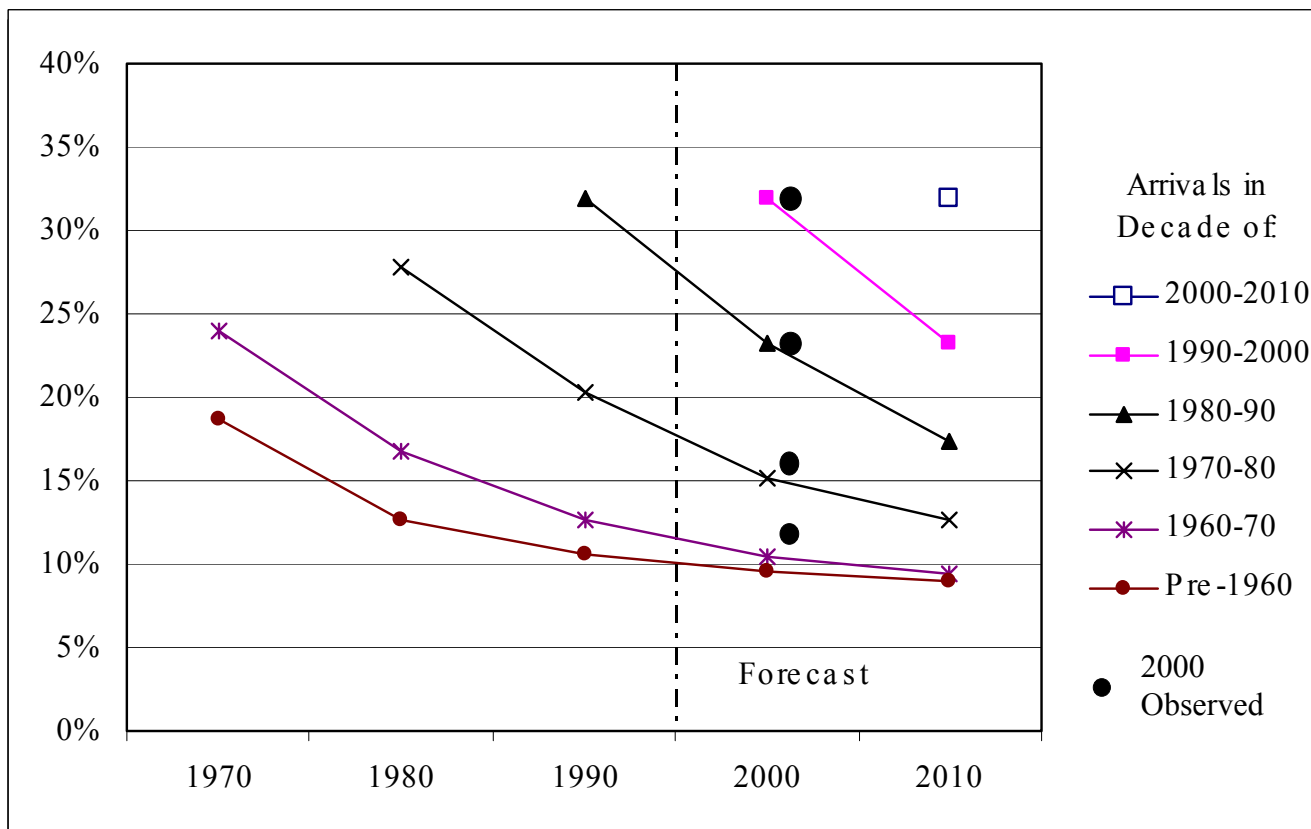
Mixed First and Second Generation Change



# New Immigrant Poverty Rates After Arrival by Race/Ethnic Groups, California 1970-2000

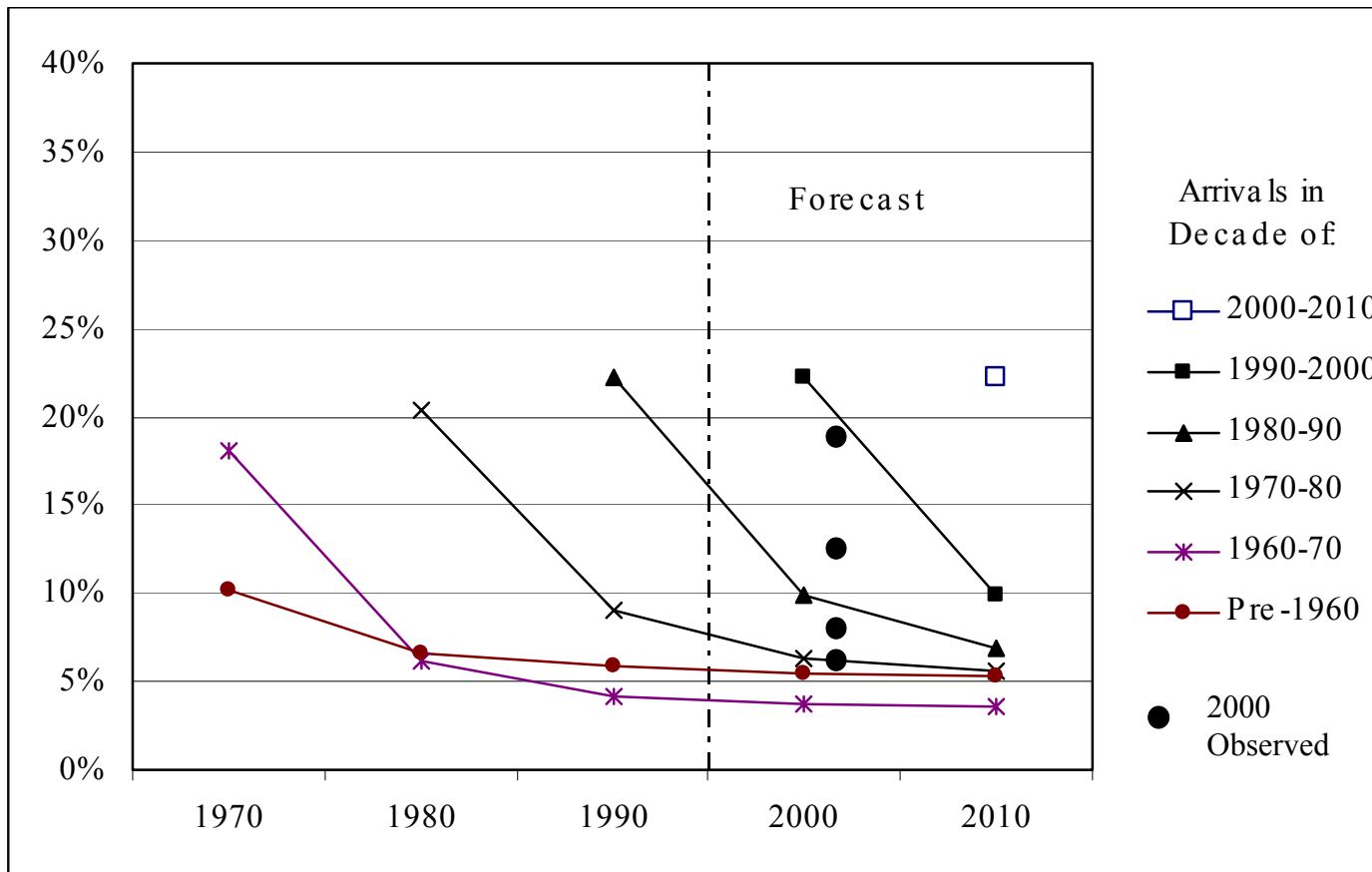


# Poverty Trajectories of Immigrant Arrival Cohorts, 1970 to 2010



## Latino Immigrants

# Poverty Trajectories of Immigrant Arrival Cohorts, 1970 to 2010



## Asian & Pacific Islander Immigrants